



*The Private
Estate of*

*La
Madrugada*



The Private Estate of La Madrugada

Extremely rare, a magnificent private estate of 40 hectares with superb sea and mountain views 3 km from the coast and 5 star hotels and 15 minutes from Puerto Banus.

With 2 wonderful houses it represents a unique opportunity for the discerning individual who values absolute privacy and security in glorious surroundings abundant with wildlife.



Principle house 'La Madrugada'

An imposing classical mansion of Moorish/Spanish architecture with high ceilings, stone arches and antique fountains built around a grand central courtyard.

It boasts 7 bedroom suites, a separate staff apartment and a large carp lake in an olive grove. There are formal gardens with a myriad of trees and beautiful roses that bloom for most of the year.



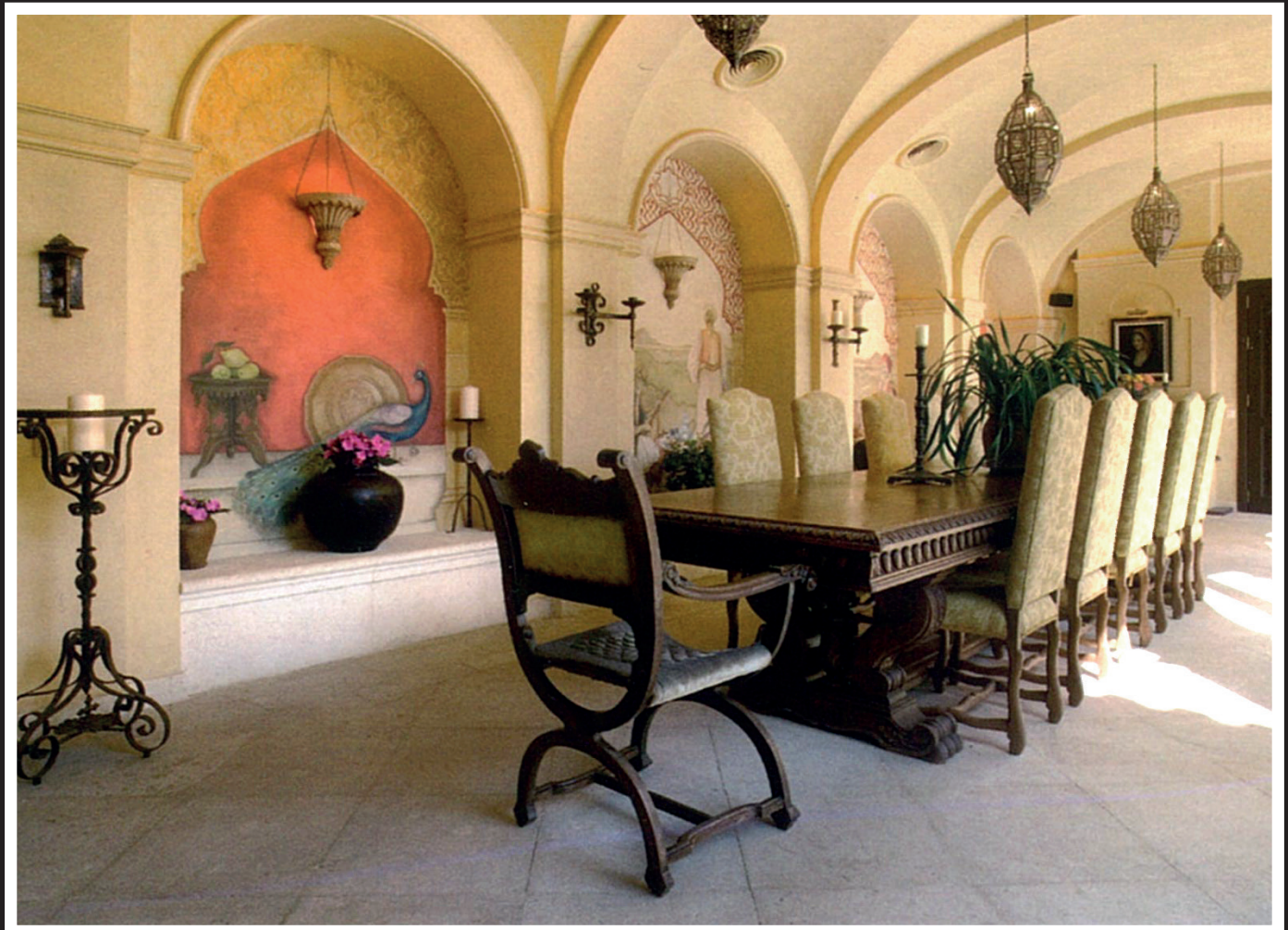














2nd House

A contemporary Moorish influenced villa of 9 bedrooms suites, staff accommodation , underground garage for 30 cars, an al Fresco dining area overlooking a large artificial lake and a separate ancient shepherd's cottage.



There is a possibility to create 2 luxury boutique hotels, a clinic or retreat.
One could make an application for a helicopter pad subject to permission.



*La
Madrugada*